



*For more  
safety!*



**ACCESSORIES**  
for indoor and outdoor applications



## Blower

Blower for blowing up  
greenhouse double film

Description	Blower for blowing up greenhouse double film.
Areas of use	Indoor
Colour	grey / metal coloured
Material	Plastic / Metal
Performance	220 V / 160 m <sup>3</sup> /h / 38 Watt

## Metal clip

Metal clip to secure film  
and shading nets

Description	Metal clip to secure film and shading nets.
Areas of use	Fixations for films and nets.
Colour	anodised
Material	Metal
Dimension	15 mm / 20 mm / 25 mm / 30 mm 35 mm / 45 mm / 55 mm
Quantities in pieces	4.700 / 2.700 / 1.615 / 1.375 855 / 655 / 320
Weight in kg	25 / 25 / 25 / 25 / 20 / 20 / 20



## Ropes

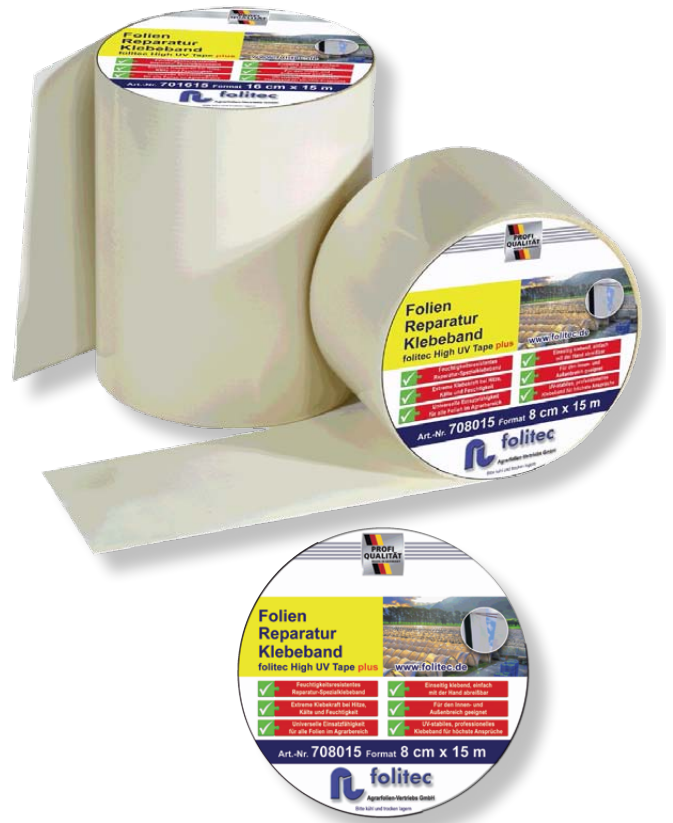
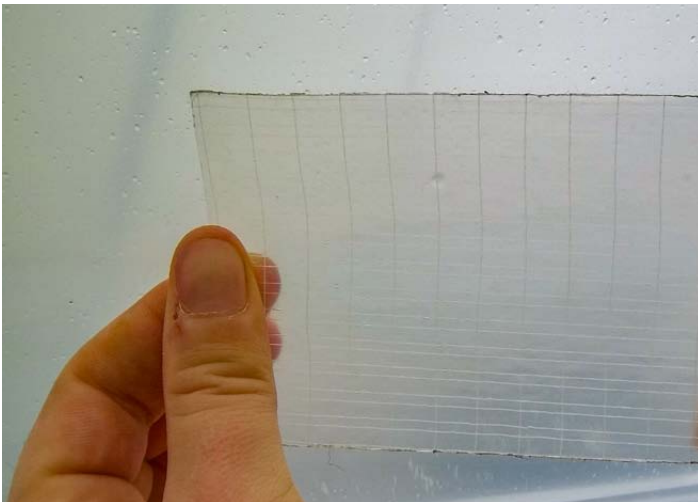
Rope for fastening the film on the tunnel

Description	Rope for fastening the film on the tunnel.
Areas of use	External / Agriculture
Colour	orange
Material	PolySteel
Ausführung	round
Diameter	6 mm
Breaking force	680 kg
Lengths	220 m / roll

## Ropes

Rope for fastening the film on the tunnel

Description	Rope for fastening the film on the tunnel. The film is clearly spared because of the soft and flat material.
Areas of use	External / Agriculture
Colour	white
Material	braided polyester without core.
Ausführung	flat
Diameter	9 mm
Breaking force	890 kg
Lengths	180 m / roll

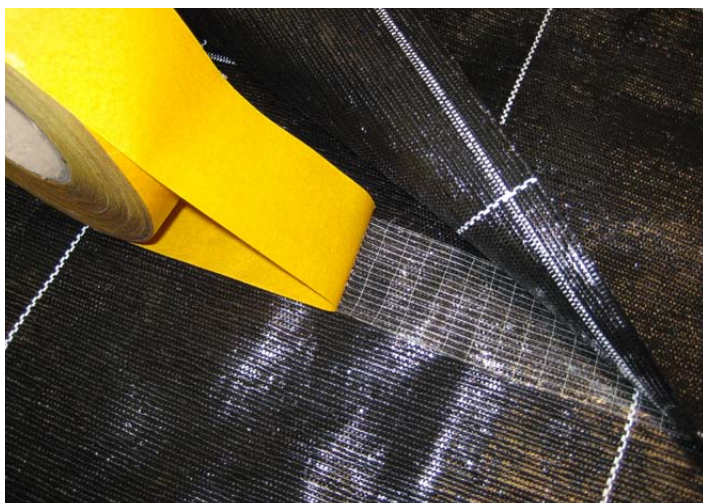


## folitec High UV tape plus Repair tape

The wet-resistant, one-side adhesive special repair for greenhouse- and tunnel-film.

Improved quality. Extreme adhesive force in coldness, heat and moisture. 5 years UV stable support material.

Description	The wet-resistant, one-side adhesive special repair for greenhouse- and tunnel-film. Improved quality. Extreme adhesive force in coldness, heat and moisture. 5 years UV stable support material.
Areas of use	Indoor / Outdoor Agriculture / Horticulture
Colour	transparent
Material	Polyethylene
Dimensions	8 cm x 15 m / 16 cm x 15 m



## Two side adhesive tape

Two side adhesive tape. Extreme adhesive force for films and groundcover

Description	Two side adhesive tape. Extreme adhesive for films and groundcover.
Areas of use	Indoor / Outdoor Agriculture / Horticulture
Colour	transparent
Material	Polyethylene
Dimensions	5 cm x 50 m

## Anti hot spot tape

PE foam - anti hot spot tape for greenhouse construction

Description	PE foam - anti hot spot tape for greenhouse construction.
Areas of use	Indoor / Outdoor
Colour	white
Material	Polyethylene foam
Dimensions	4 cm x 10 m



[www.folitec.de](http://www.folitec.de)

**folitec Agrarfolien-Vertriebs GmbH**  
Siemensstr. 11 / Industrial Park Sainscheid  
D-56457 Westerburg  
fon: +49 (0) 26 63 - 28 00 0  
fax: +49 (0) 26 63 - 28 00 10  
E-Mail: [vertrieb@folitec.de](mailto:vertrieb@folitec.de)

